



BEAUFORT GREEN

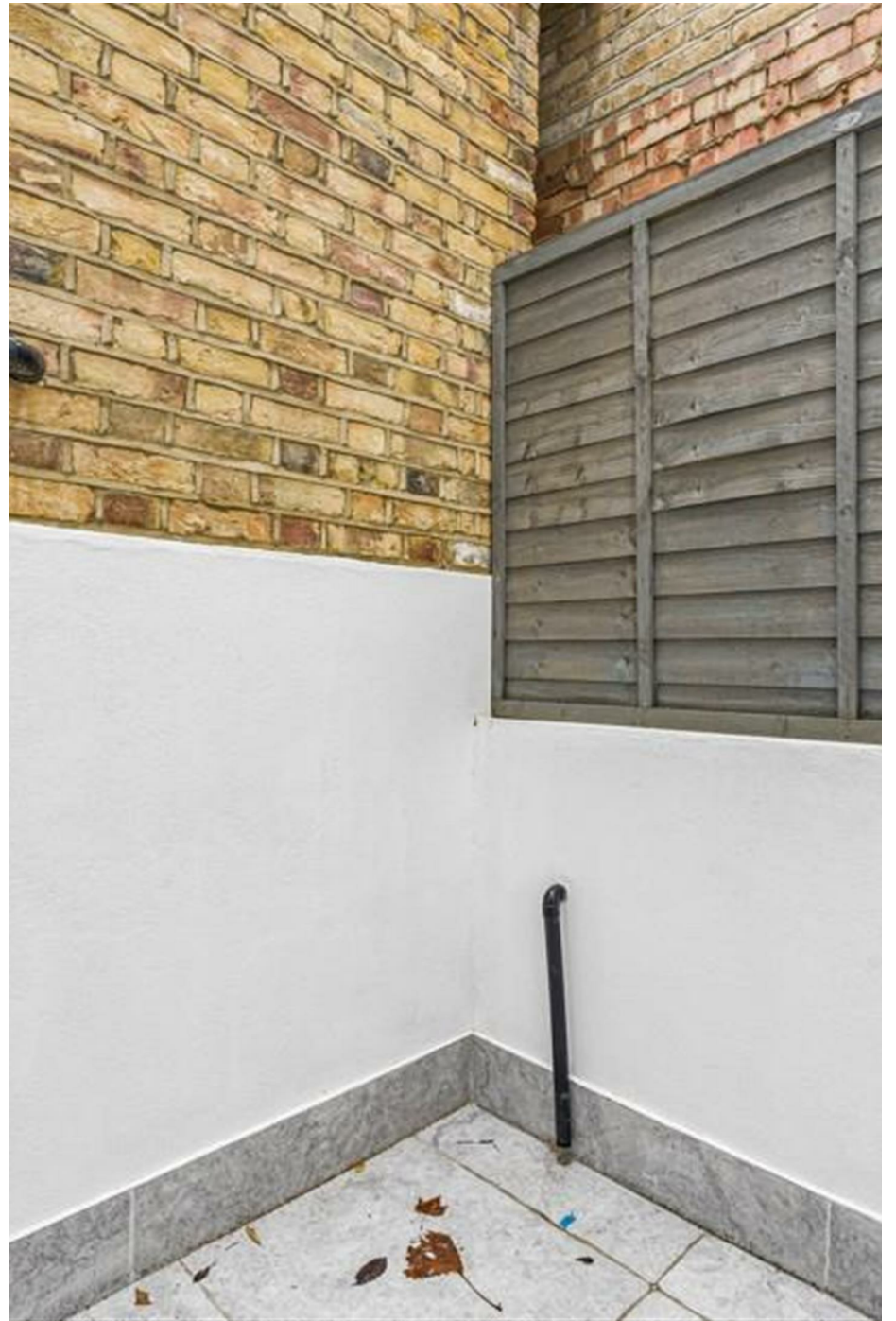
Harwood Road, SW6

£2,800 Per month



A well finished, one double bedroom apartment with outdoor space which is moments away from Fulham Broadway and Eel Brook Common.





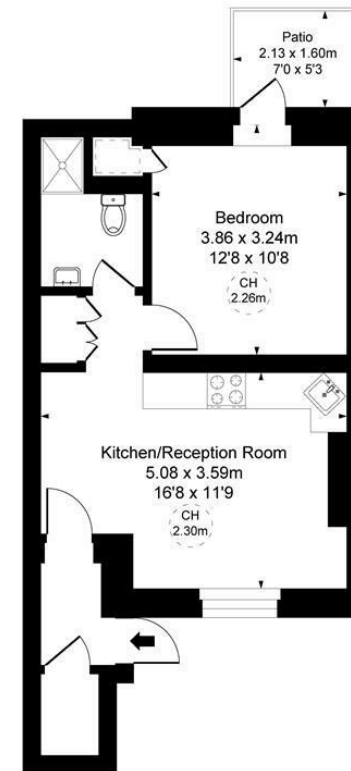
BEAUFORT GREEN



BEAUFORT GREEN

At a Glance.

Harwood Road, SW6
Approximate Gross Internal Area
41.29 sq m / 445 sq ft
(CH = Ceiling Heights)



Lower Ground Floor

This plan is not to scale. It is for guidance and not for valuation purposes.
All measurements and areas are approximate only, and have been prepared in accordance with the current edition of the RICS Code of Measuring Practice.

BEAUFORT GREEN

02074594100

charlie@beaufortgreen.co.uk

263 New Kings Road
London
SW16 1DB